

St Matthias Newsletter



St Matthias Church of England Primary School

Headteacher: Mrs Virginia Beale

Cromwell Road, Malvern Link, Worcestershire, WR14 1NA.

Telephone 01684 574984

Email: head@stmatthias.worcs.sch.uk

Website: www.stmatthiasceprimary.co.uk



Thursday 7th April 2022

Dear Parents, Carers and Children,

I would like to wish you all a wonderful, safe and exciting Easter Holiday and we look forward to seeing you all on **Monday 25th April** at 8.45am. The staff are training in school tomorrow for a 'Spirituality' Teacher Education Day. Developing children's spirituality is a key part in helping children to flourish in all that they do in school. The Church School Inspection requires spirituality to be developed separately from moral, social and cultural education. During the day we will explore what spirituality is and this will help us to create a shared common language for spirituality within our school which will maintain the integrity of Christianity whilst being inclusive to all faiths and none. From this training, we will consider how to continue to develop spirituality at St Matthias.



Easter Service

The school came together on Wednesday morning for a beautiful Easter Service; this was led by the children and each class had their part to play. We used the traditional song 'Lord of the Dance' to explain the events within the Easter story. Through the Easter service there were readings written by Year 5, a Palm Sunday parade by Early Years, a re-enactment of the Last Supper by Year 3, 'conscious alley' focusing on Good Friday by Year 6, Resurrection artwork by Year 2, Year 1 symbolised Easter by singing the 'Spring Chicken' song and the service was completed with Easter prayers written by Year 4. If you wish to view the service a 'Zoom' recording will be sent via ClassDojo or email for you to watch at home, when we receive it from church. Please do not share this link with anyone outside of St Matthias and do not put on social media. Thank you.



Easter Bonnet Parade

We were treated to a wonderful Easter Bonnet Parade today by our wonderful Early Years and Key Stage 1 children. The children made their Easter Bonnets in school then paraded the beautiful bonnets through the playground, along the alley, past St Matthias Church, along Church Road and then back into school with lots of parents, staff and children clapping. We are so proud of you all!



Easter Fund Raiser

Thank you to everyone who donated Easter eggs for the Easter Wall lucky dip and to everyone who bought a brick to be in with a chance of winning an egg! **We raised an amazing £149.50** for our school fund. We had an eventful worship where there were lots of smiles and 'eggitement' when bricks with names were pulled out of the bucket!



Have a lovely Easter, see you all on the 25th April, Mrs Beale.

ASPIRE, BELIEVE, ACHIEVE

'Our school family values us all as unique individuals and children of God.

We **aspire** to be the best version of ourselves; **believing** that through the gifts God has given us, we can make a positive contribution, flourish and **achieve** together to make a difference in our ever-changing world.'



Science Enrichment Day

At the beginning of the day, we had an assembly which was led by Mrs Joyce. She told us about the different types of scientific enquiry. Then, Mrs Joyce told us all who we were going to be learning about. Reception had Archimedes, Year 1 - Isaac Newton, Year 2 had Thomas Edison, Year 3 - The Wright Brothers, Year 4 - Maria Beasley, We (Year 5) had Charles Darwin and Year 6 - Dr Maggie Aderin-Pocock.

Firstly, we (Y5) went to the field. We were searching for mini beasts, then we used some magnifying glasses to have a closer look. We later created our own classification keys in groups about the mini beasts that we found in the field.

Afterwards, we did a test called 'Battle of the Beaks'. We used clothes pegs, teaspoons, tweezers and scissors to act as the different shapes of beaks so we could see what beak shape was the best for different types of 'foods'. Written by Tiffany and Elizabeth.

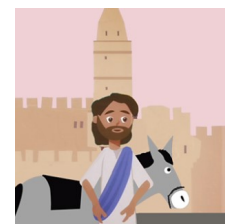


HOLY WEEK:

Sunday 10th April marks the start of Holy Week. Easter is the most important Christian event in the Church Calendar along with Christmas. This year Holy Week will be during our Easter holiday.

**Palm Sunday (Sunday 10th April)**

This is the Sunday before Easter Sunday. It is the first day of Holy Week and celebrates Jesus' arrival in **Jerusalem** riding on a donkey. Crowds of people came out of the city to greet him, throwing down **palm branches** on the road. Anglican and Roman Catholic churches give out **small crosses** made from palm leaves as a reminder of Jesus' entrance into Jerusalem and his death on the cross. Some Christians keep these in their homes all year as a symbol of their faith.

**Maundy Thursday (Thursday 14th April)**

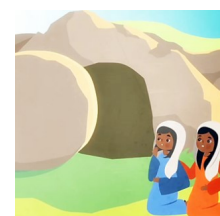
This is the Thursday before Easter Day. On Maundy Thursday, Christians remember when Jesus ate the **Passover meal** with his disciples, breaking bread and drinking wine. Christians refer to this meal as the **Last Supper**. Many Christians remember the Last Supper by sharing bread and wine together in a church service called Holy Communion, Eucharist or Mass. It is a reminder that Jesus sacrificed his life for mankind.

**Good Friday (Friday 15th April)**

Good Friday is the Friday before Easter Sunday. It commemorates the execution of Jesus by **crucifixion**. Good Friday is a day of mourning in church. During special Good Friday services, Christians remember Jesus' suffering and death on the cross and what this means for their faith. In some countries, there are special Good Friday processions, or re-enactments of the Crucifixion.

**Easter Sunday: (Sunday 17th April)**

Easter Sunday marks Jesus's **resurrection**. After Jesus was crucified on the Friday his body was taken down from the cross and buried in a cave tomb. The tomb was guarded by Roman soldiers and an enormous stone was put over the entrance. On the Sunday, **Mary Magdalene** and some of Jesus' disciples visited the tomb. They found the stone had been moved and that Jesus' body had gone. Jesus was seen later that day by Mary and the disciples and for forty days afterwards by many people. His followers realised that God had raised Jesus from the dead. Christians call this the resurrection.

**Easter Eggs**

An egg is a symbol of new life. For Christians, Easter eggs are used as a symbol for the Resurrection of Jesus. Christians believe that, through his resurrection, Jesus overcame death and sin. This offers people the promise of eternal life if they follow his teachings. Nowadays, most Easter eggs are made from chocolate and covered in coloured foil. Traditionally though, chicken eggs would be hard boiled and then decorated by hand. Traditional Easter egg hunts remain popular with both Christian and non-Christian children.

Community Fridges

There are a number of Community Food Fridges around Malvern so if you need extra supplies this Easter you can pop along and see what they have.

St Mary's Church, Sherrards Green Road (9am-12 Thursday & Friday)

The Octagon in Brookfarm Drive (Friday's 9.30-11am)

The Ascension Hall, Somers Park Av (Monday 10.30am-1pm)



Celebration Worship Awards

Every Friday we hold a 'Celebration Worship' to give out awards to our children to celebrate their achievements. Currently these are held virtually from the classroom using either Teams or Zoom.

Certificates (Effort in their work): R. Nicolas, 1. Amelia, 2. Ellis, 3. Coby, 4. Grace, 5. Olivia 6. Oliver.

Value Leaf for showing Hope: R. Hope, 1. Charlie, 2. Jasmine, 3. Zach, 4. Lily P, 5. Holly, 6. Demi.

Spotted (Improved Spelling & Editing): R. Isaac, 1. Jake, 2. Addison, 3. Susie, 4. Poppy, 5. Lily-May, 6. Freya.

Attendance Awards

Congratulations to the 28 Children who had 100% attendance for this term, (January to today)

Max in Yr 4 had his name pulled out of the hat to win the award.

Congratulations to the 76 pupils who had 100% attendance for March

Tommy Yr 2 had his name pulled out of the hat to win the award.

Outside Achievements

We have more outside achievements to celebrate this week. They were shared in our Worship this morning and we hope to inspire lots of you to share your outside achievements with us in school!

Well done, we are very proud of you !



Mr Salmon completed the Manchester Marathon last weekend and he achieved his personal best of under 3 hours! Yes 26.2miles in 2 hours 59mins. Congratulations Mr Salmon!

Glyn Y5 – has started Taekwondo lessons and is looking forward to working hard for his belts.



Attendance The table below shows class attendance statistics for **this week**.

	Percentage	Sessions missed		Percentage	Sessions Missed
Nursery	98.0%	2	Year 3	93.7%	15
Reception	90.2%	18	Year 4	79.5%	36
Year 1	85.4%	14	Year 5	93.0%	15
Year 2	100%	0	Year 6	93.5%	15

There are two sessions in every day, am and pm. All children from Yrs R - 6 attend 10 sessions per week.

Well done to **Year 2** for the best attendance this week & for the least missing sessions & **Nursery** above 96% well done!

Hope



As a church school, every half term we concentrate on an important value for life. Each half term we choose a special Value which we think about very carefully in our worship, our classrooms, in our playground and everywhere in school. We will focus on what they mean in our lives and in our relationships with each other.

Our Value this half term is "Hope"

Isaiah 40:31 "Those who hope in the Lord will renew their strength. They will soar on wings like eagles; they will run and not grow weary, they will walk and not be faint"

Christians see their hope in God's promise, "that love and goodness have and will ultimately overcome all evil"

Dalai Lama "When faced with problems don't lose hope. Keep up your self confidence and don't be too impatient to achieve quick results."

Gandhi " Only he can be a leader who never loses hope"

Teachers will be on the look out this half term for children who are really trying hard to show hope in their learning and around school. We pray and hope for the people in Ukraine and for the war to end.

Hope





NOTICEBOARD



Reminders

Whole School Events

School Closed for Easter Holiday
Thursday 7th April at 3.15pm

School Opens for Summer Term
Monday 25th April at 8.45am

Summer Term Clubs

Mondays

Years 1 and 2 Athletics
Yr 6 Maths Booster (2 wks)

Tuesdays

Cooking Yr 4 (Fully Booked)
Yr 1 Homework **ends 4pm**
Yr 6 English Booster (2 wks)

Thursdays

Years 3 and 4 Cricket
Yr 2 Booster 4 wks then Homework
Years 3, 4, 5 & 6 Homework

Fridays

Years 5 and 6 Tag Rugby
Clubs end at 4.15pm

Class Events

Height + Weight Check Yrs R & 6
Thursday 5th May See letter
which came by email on 30th
March.

Young Voices Concert
Tuesday 17th May 2022

**Years 5 & 6 Oakerwood
Residential Trip** (For those who
have booked and paid) Wednes-
day 18th to Friday 20th May.

HELPFUL INFORMATION

Who to contact in school

MRS KAZEROONI for:- Attendance issues, reasons for absences, request forms, change of address, email or phone numbers, general enquires, urgent contact, to inform her of medical appointments, (inform her of other persons collecting from school **preferably before 1pm**). email admin@stmatthias.worcs.sch.uk or Telephone **01684 574984**

MRS JAMES (Works Mon - Thu) for finance issues ie:- Whizz Kids or nursery bookings, paying any bills or invoices, trips, music lessons, PE kit etc please email finance@stmatthias.worcs.sch.uk or Phone **01684 574984** and ask to speak to Mrs James.

CLASS TEACHER for:- classroom issues, learning or behaviour related, use ClassDojo or Tapestry. To request a telephone call from a teacher call 01684 574984 or email admin@stmatthias.worcs.sch.uk to ask for an appointment.

MRS BEALE Headteacher for:- urgent personal/private matters on head@stmatthias.worcs.sch.uk

Black Pepper Lunches for:- booking your child's meals **every half term**, visit their website <https://www.blackpepperlunches.com/BP-default.php>

Severn Trent Water - Big Difference

Help that is available from **Severn Trent Water** for reducing water bills for families with low household incomes. If eligible for the scheme, you could receive a discount of up to 90% off your water bill and potentially suspend any arrears. Please click here for more information.

<https://bigdiff.co.uk/login.php>

Platform Housing customers only

Platform Housing have launched a 'Wellbeing Fund' for all customers to access in order to help cover the cost of food, essential items such as school uniforms, energy and utility costs as well as helping to bridge the gap between a benefit application and first payment. You can apply following this link.

<https://www.platformmhg.com/wellbeing-fund>

Covid 19

COVID-19 symptom check ([click here](#))
Book an NHS COVID test ([click here](#))
or ring **119**

Book a COVID-19 Vaccine ([click here](#))

Support and Advice

Adult Mental health support ([click here](#))

Starting Well- for parenting, health and wellbeing support ([click here](#))

Here2Help- ([click here](#))

Bereavement support ([click here](#))

Citizens Advice Bureau ([click here](#))

Child Line - 0800 1111

Domestic Abuse 24 hour Helpline for Women and Men - 0800 980 333

School Nurse – 01684 612668

Family Front Door - 01905 822666 to request help or to report a concern about a child.

The Family Hub for parenting support and advice ([click here](#))

Parent Online Safety Information ([click here](#))

Malvern Hills Housing support ([click here](#))

TERM DATES & HOLIDAYS

SPRING TERM 2022

SCHOOL CLOSSES for EASTER

STAFF ONLY - Training Day

at 3.15pm on Thursday 7th April 2022

Friday 8th April 2022.

SUMMER TERM 2022

SCHOOL OPENS

MAY DAY BANK HOLIDAY

HALF TERM BREAK

SCHOOL CLOSSES for SUMMER

Extra Day off for Queens Jubilee

Monday 25th April at 8.45am

Monday 2nd May

Saturday 28th May to Sunday 5th June

Thursday 21st July at 3.15pm

Friday 22nd July