

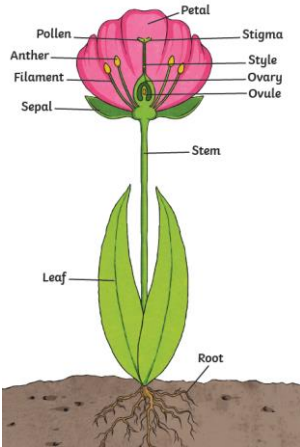
Unit: Plants

Year: 3

Term: Spring 1

Key Knowledge

Parts of a flowering plant:



Seed dispersal:

How Seeds Travel

by the wind



milkweed



dandelion



maple

by animals



beggar-ticks



sandbur

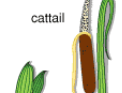


blackberry

by water



lotus



cattail



coconut

by bursting



violet



jewelweed



witch hazel

by humans



bean



wheat



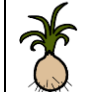
cherry

© 2006 Encyclopedia Britannica, Inc.

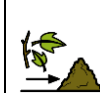
Key Vocabulary



bud - small lump that appears on a plant and turns into a leaf or flower



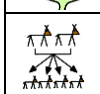
bulb - a root shaped like an onion that grows into a flower or plant



compost - decayed plants and vegetable waste which is added to soil to help plants grow



fertilisation - pollen travels to the ovary where it fertilises egg cells to make seeds



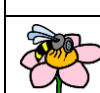
reproduction - a plant produces one or more plants similar to itself



nutrients - substances that help plants and animals to grow



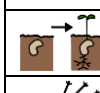
pollen - fine powder produced by flowers that fertilizes other flowers so they produce seeds



pollination - the transfer of pollen from one flower to another



seedling - a young plant that has been grown from a seed

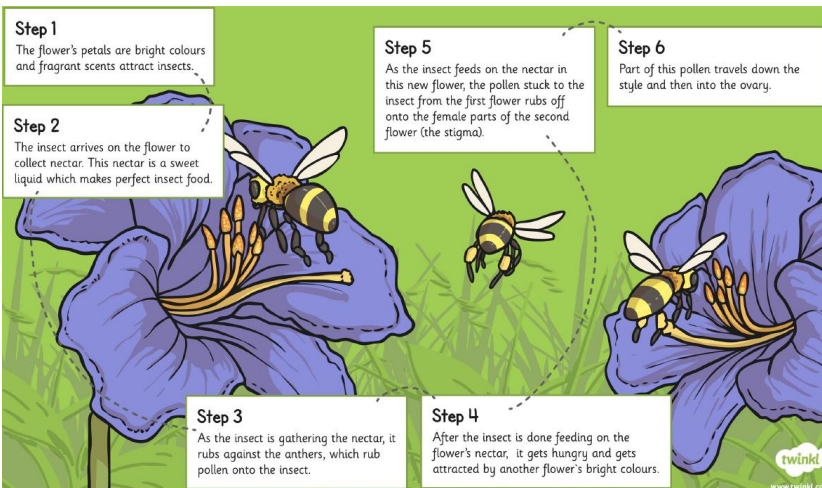


germination - a seed starts to grow



seed dispersal - spreading of seeds

Pollination:



Famous Scientist:

Sir Joseph Banks (1743 –1820)
Banks travelled the world collecting plants and other specimens before bringing them back to the UK to study them further.

